



R U N T I M E X L

TECHNICAL SPECIFICATIONS



RUNTIME XL

the best of running and walking analysis

The RunTime XL baropodometric treadmill, with a fully sensorized support surface, allows an accurate analysis of plantar pressures, detecting the distribution of the load on the ground during the walking and running phases. The HD monitor positioned on the dashboard allows the user to have feedback on performance in real time.

The use of cameras (up to 4) synchronized at the support also allows a detailed evaluation of the postural attitude during the movement.

Data acquisition and processing is performed using the freeStep software, in order to obtain a simultaneous evaluation of plantar support, posture and biomechanics.

ADVANCED TECHNOLOGY

Dynamic study of walking and running using advanced technologies.

PHASES OF WALKING AND RUNNING

Identification and study of the phases of walking and running.

COMPLETE ANALYSIS

Symmetry indices to evaluate homogeneous behavior in kinematic parameters and pressure distribution.

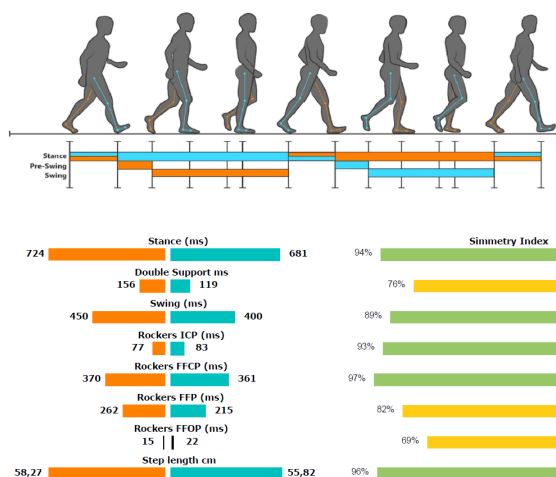
RUNTIME XL Technical features

DIMENSIONS

- Sensorized area: 120x50 cm
- Maximum load weight: 180 kg
- Dimensions: 2109x953x1565 mm

TECHNICAL SPECIFICATIONS

- Sampling rate: up to 200 Hz in real time
- USB interface
- Optional digital cameras
- Speed: 0,5–20 km/h with an increase of 0.1 km/h
- Adjustable inclination
- Symmetry indices of biomechanical analysis
- Diversified charts for walking and running analysis
- Intuitive dashboard dedicated to pace analysis
- Visual representation of the Gait Line
- Print reports with curves, graphs and indexes of symmetry optimized for easy reading
- Dynamic real-time dashboard
- Efficiency indices
- 24K gold coated resistive sensors



Company whitt Management System
Quality Certificate N° 50 100 16690



CERTIFICATION
CE FDA MD NMPA