

FLEXINFIT

TECHNICAL SPECIFICATIONS



FLEXINFIT

system for detecting foot pressure inside the shoe

FlexInFit represents the evolution in the field of biomechanical and postural analysis, which until now has been almost exclusively linked to the use of baropodometric platforms. Each pair of insoles is made up of over four hundred pressure sensors and allows for accurate analyses to be carried out inside the patient's shoe, for real-time monitoring of the progress of the examination and for recording data flows for up to four hours.

FlexInFit is a versatile tool that simplifies the work of many professionals: from the foot specialist who wants to integrate his or her gait analysis system, to the physiotherapist who wants to verify the actual progress of a therapeutic path. From the athletic trainer interested in studying sports movement and improving it, to the doctor interested in verifying the real points of hyperpressure to prevent the formation of ulcers in diabetic patients. FlexInFit is also a device used in the production of insoles, useful for verifying their effectiveness directly during the testing phase of the insole.

The device is completely wireless and free of cables and control units, as they can somehow interfere with the natural movement of walking, and interfaces with the freeStep biomechanical and postural analysis software.

FLEXINFIT Technical features

DIMENSIONS

- Available insole sizes: from 35 to 48 EU
- Thickness: 0.3 mm
- Number of sensors: over 400 per pair of insoles

ELECTRICAL DATA

- 3.7 V 280 mAh rechargeable battery, up to 4 hours of battery life

TECHNICAL FEATURES

- Hypoallergenic polyester material
- Reusable for multiple examinations or used as a single-use
- Sensor type: resistive
- Sensor density: 10000 per m²
- Sensitivity: 0.1 N
- Measuring range: 0-100 N
- Acquisition frequency: up to 100 Hz
- Bluetooth transmission up to 100m indoors
- Data streaming or storage on SD card

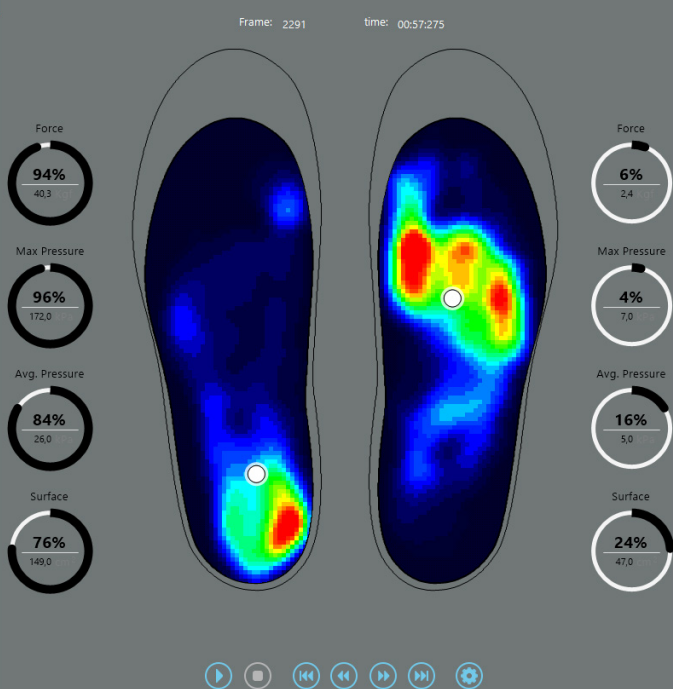
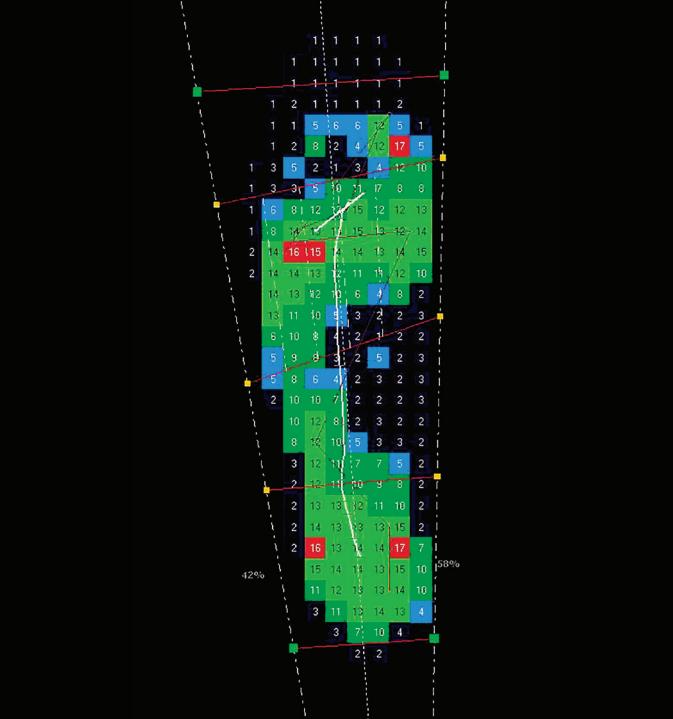
CONNECTIVITY

- Bluetooth

SOFTWARE

FlexInFit interfaces with the freeStep biomechanical and postural analysis software, which offers detailed assessments and reports.

- Integral Pressure Time, Gait Line, Rocker, Curve
- Pressure map and CoP visualization in the butterfly chart



Company whitt Management System
Quality Certificate N° 50 100 16690



CERTIFICATION
CE FDA MD NMPA